

AVALON

THREE BEDROOM DETACHED HOME



CLENDINNING

at maghon park

AVALON

THREE BEDROOM DETACHED HOME

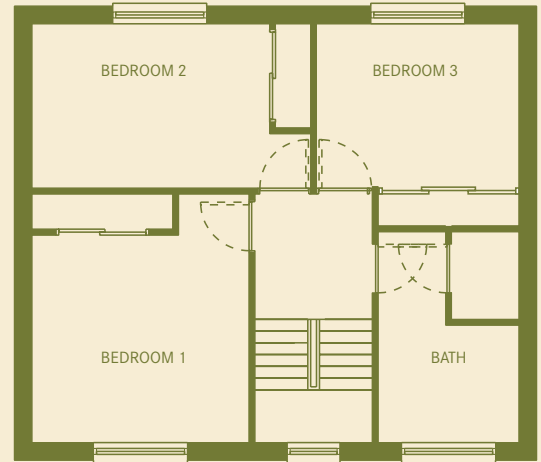
Seven Detached Three Bedroom residences in an exclusive cul-de-sac setting.

- Gas Heating
- Double Glazing
- Ready to move into
- Attached Garage
- Brick Paviour Driveway
- Mature Residential Setting

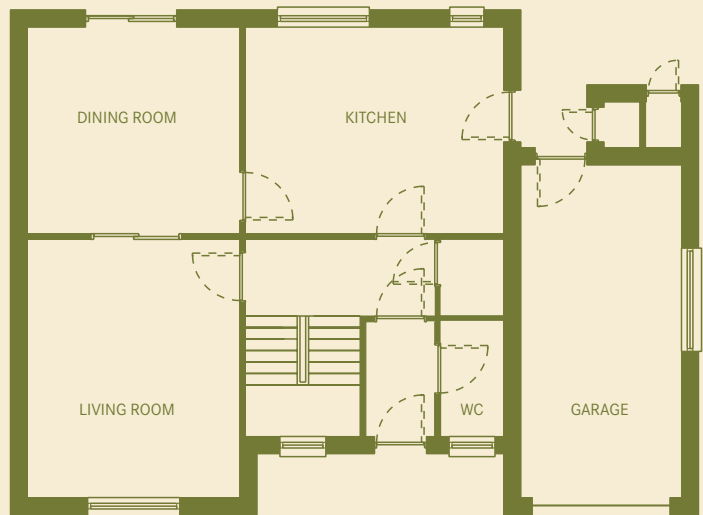
Dimensions	Feet	Metres
Kitchen	13'7"/11'4"	4.14/3.45
Dining Room	12'1"/11'4"	3.68/3.45
Living Room	14'10"/12'1"	4.52/3.68
WC	6'1"/3'4"	1.85/1.01
Bedroom 1	13'2"/12'1"	4.01/3.68
Bedroom 2	15'4"/9'5"	4.67/2.87
Bedroom 3	10'5"/9'4"	3.17/2.84
Bathroom	10'11"/7'5"	3.33/2.26
Total Area	1246ft ²	116m ²
Garage	18'10'/9'0"	5.74/2.74

Site Plan Colour Reference: ●

All dimensions are approximate and are taken at widest points. The measurements above were taken from No. 2 Clendinning Avenue. Other Avalon house type measurements may vary slightly.



FIRST FLOOR



GROUND FLOOR